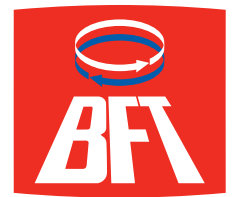
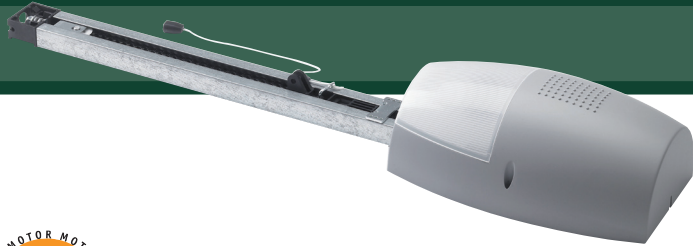


EOS 120

ELECTROMECHANICAL OPERATOR FOR SPRING-OPERATED OVERHEAD DOORS



Opens the future



CODE	DESCRIPTION	VOLTAGE	TRACTIVE FORCE
P915195 00002	EOS 120	24 V	up to 120 kg
P915110 00001	TIR 120 LF*	24 V	up to 120 kg

* Available while stock last

• SMART TECHNOLOGY.

- Control unit with self-learning and self-diagnostic functions (EOS 120).
- Encoder-type limit switch without references in the chain.
- Control unit compatible with the EELink protocol (EOS 120).

• SAFE USE.

- Specially designed for simpler and faster installation in compliance with the safety standards laid down by the Machinery Directive.
- Thanks to the antisquashing system, the operator inverts motion and prevents damage to people and property in the event of contact (BT).
- The strength of the track provides greater resistance to stress during assembly and in operation.

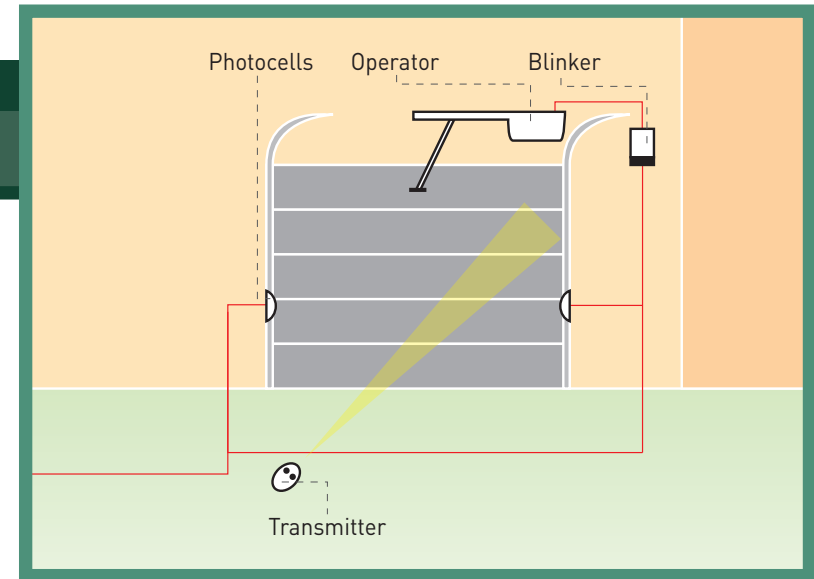
• SIMPLER INSTALLATION.

- The track can be fixed directly to the ceiling without using brackets. The cables are housed inside two grooves formed in the track itself.
- Working stroke recovery possibility by rotating the motor head 90°.

TECHNICAL FEATURES

	EOS 120	TIR 120 LF
CONTROL PANEL	VENERE D (incorporated)	STIR LF1 (incorporated)
REVERSIBLE/IRREVERSIBLE OPERATOR	irreversible	irreversible
POWER SUPPLY	230V~ ± 10%, 50 Hz single-phase	230V~ ± 10%, 50 Hz single-phase
ABSORBED POWER	240 W	240 W
FORCE	1200 N	1200 N
OPENING OR CLOSING TIME	28 s	28 s
IMPACT REACTION	electronic torque limiter integrated in the control panel	electronic torque limiter integrated in the control panel
TYPE OF LIMIT SWITCHES	electronic with encoder	microswitch
MANUAL RELEASE	unlocking with rope	unlocking with rope
OPERATING CYCLE	intensive use	intensive use
ENVIRONMENTAL CONDITIONS	from -15°C to + 60°C	from -15°C to + 60°C
DEGREE OF PROTECTION	IPX0	IPX0
OPERATOR WEIGHT	80 N (~8 kg)	80 N (~8 kg)
DIMENSIONS	see drawing	see drawing

RESIDENTIAL AND APARTMENT-BLOCK USE



ACCESSORIES



P115010 00001 - BIN 120 CATENA 2900
Chain track for EOS 120, length 2900, working stroke 2400 mm.



P115005 - SM1
External manual release with single cable control to be fitted to the cremone bolt. Obligatory if there are no secondary access doors to the premises.



P115010 00002 - BIN 120 CATENA 3500
Chain track for EOS 120, length 3500, working stroke 3000 mm.



N999060 - APT
Complete kit for assembly 25 cm from ceiling or directly on the ceiling (EOS 120, TIR).



P115010 00003 - BIN 120 CATENA 2x1450
Chain track for EOS 120, length 2x1450, working stroke 2400 mm.



P115003 - ST
Automatic bolt release for spring-operated overhead doors.



D111720 00002 - PR2
Wall radio control with rolling code.



P115010 00004 - BIN 120 CATENA 2x1750
Chain track for EOS 120, length 2x1750, working stroke 3000 mm.



N733069 - SET/S
External release for insulated sectional and overhead doors up to 50 mm thick.



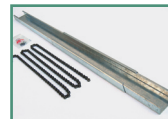
P125006 - CB EOS
Thanks to the back-up batteries and battery charger, the CB EOS kit guarantees low voltage operation in the event of power failure.



P115002 - BRCT
Adapter arm used to install Botticelli, TIR and EOS to counterweight overhead doors.



N733064 - PT1
Complete kit for extending working stroke by 1 m, up to 3.5 m, for TIR only.



N733287 - PRE1
Complete kit for extending working stroke by 1 m, up to 3.5 m, for EOS only.

DIMENSIONS

