



# GIRRI 130

## **Sliding gate operator**

---

Electro-mechanical

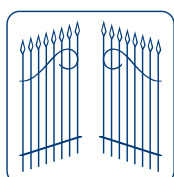
---

For gates up to 400 Kg

---

Heavy duty residential applications

---



**FADINI**<sup>®</sup>  
the gate opener  
Made in Italy





## Complete kit automation for a sliding gate

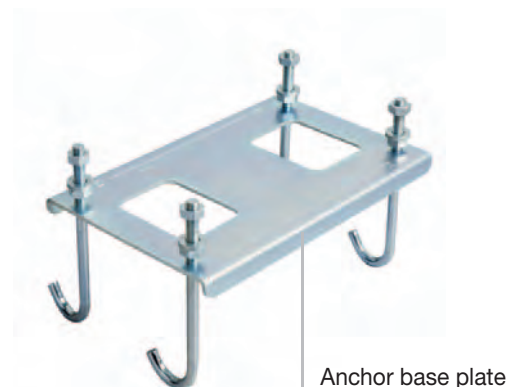
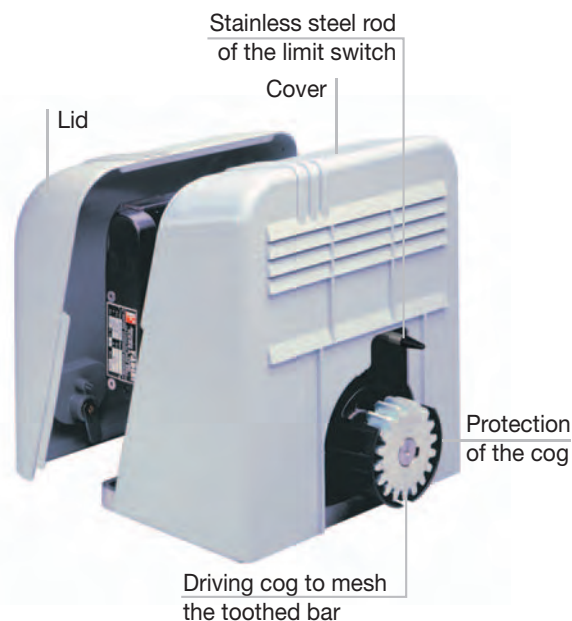
# GIRRI 130

**GIRRI 130** is an electro-mechanical operator designed to be installed to medium size sliding gates up to 400 Kg of weight.

It is compact to take up as little room as possible, made of pressure cast aluminium, fitted with a fixing base plate to firmly anchor the operator to the ground, suitable holes are provided in the plate to allow the electric command cables and the mains to go through. The electric motor and the gear worm are in vertical position; the shaft is coupled to the cog which is fitted outside the cover; the shape of the cover with rounded corners and suitable slots to provide aeration to the motor/gear assembly makes the unit very compact and pleasing to the eye. The electronics, built-in under the cover, is designed to provide facilities for all the operations the gate is required to perform through the command devices, the photocells, remote control, push buttons, for the warning light, for the anti-crush devices and for the adjustment of the pushing/pulling power generated by the motor. All this makes the operator safe and reliable. The central shaft is fitted with the worm and is coupled to the helical gear.

It is supported by bearings and special bushings, self-lubricated with grease to eliminate the friction from the moving parts.

The manual release is by a knob which is protected inside the cover, the front part of which can be removed and locked back to the original position by means of an encoded key. This is an assurance that the operator is securely locked up, but can be easily opened and released in case of an emergency like a power failure. The outer driving cog is protected by special shoes to prevent objects/parts of body from being trapped between the teeth during the motion of the gate. The limit switch is mechanical and is fixed under the cover. It is fitted with two dip-switches which are mechanically activated by a stainless steel rod that juts out of the cover and is to strike a suitably shaped plate on the gate. This brings the gate to a steady halt through the electronic card which passes the stop command on to the brake in the electric motor. Once the lockable cover is removed, the low voltage circuit is automatically disconnected by means of a micro-switch under the cover. This stops the equipment working in the case of servicing, repairing or adjusting. The option is given (only on the customers' request) of a line switch to cut off the mains. All the accessories, providing either operating pulses or safety functions, are easy to connect by keeping to the instructions provided with GIRRI 130. The guarantee that it is a good, reliable and long life unit is directly certified by "MECCANICA FADINI" thanks to its expertise achieved over many years' experience.





## Accessories



**PRIT 19**  
keyswitch



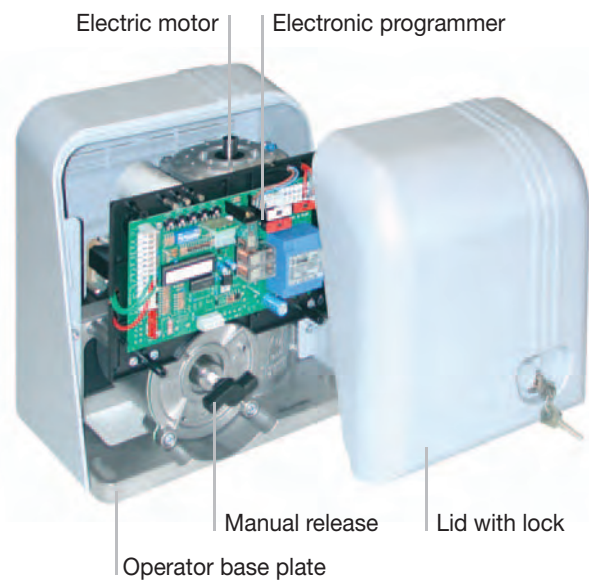
**MIRI 4**  
flashing lamp with  
rod aerial **Birio A8**



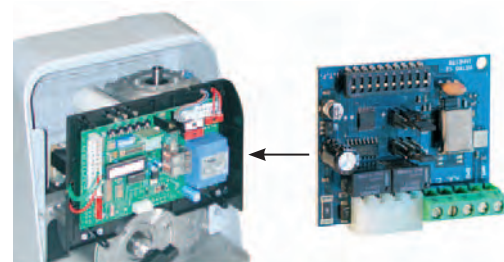
**TRIFO 11**  
pair of photocells



**ASTRO 43/2 TR Small**  
transmitter 2 channels



**LIMIT SWITCH STRIKING PLATES**  
5 metres nylon gear rack



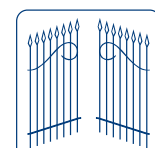
**ASTRO 43/2 SAW**  
plug-in radio receiver



Girri 130 and photocell  
Trifo 11 with post



Screw and  
square washer



**FADINI**  
the gate opener  
Made in Italy



# GIRRI 130 Gate operator

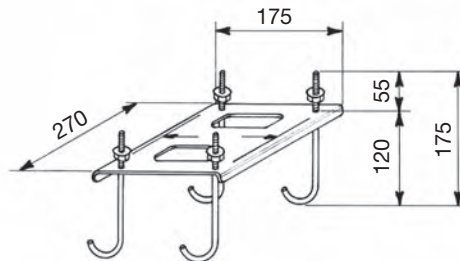
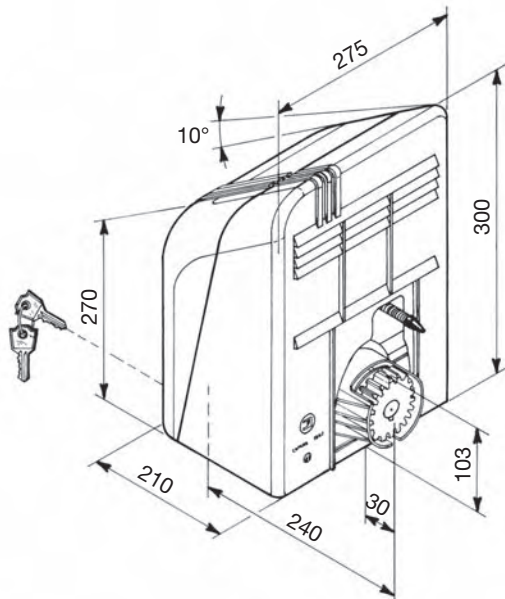


Electric Motor	
Power output	0.25 KW (0.33 HP)
Supply voltage/Frequency	230 V / 50 Hz
Absorbed power	530 W
Absorbed current	2.5 A
Capacitor	20 $\mu$ F / 450 V
Motor rotation speed	1'320 rpm
Intermittent service	S3
Insulation class	F

Electro-mechanical Operator	
Type of lubrication by Agip	MU/EP1 Grease
Travel speed	10 m/min.
Rated torque	28.0 Nm
Weight of the operator	14 Kg
Static weight of the gate	400 Kg
Gear rating	1/30
Environment temperature	-25°C +70°C
Protection standards	IP 535
Duty cycle	30 sec. opening - 30 sec. stop - 30 sec. closing
Time of one complete cycle	90 s
No. of complete cycles Opening - Stop - Closing	No. 40/h
Cycles a year, 8 hours' service a day	No. 116'000

## WARNINGS

- Packing materials (such as cardboard, polystyrene, and nylon) must be disposed of properly through specialised companies.
- The electrical equipment must be properly earthed.



We recommend that installation complies with applicable regulations, the instructions enclosed and EN 12453 and EN 12445 standards in observance of essential EC requisites

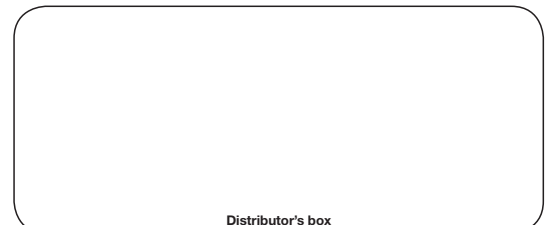


Directive 2003/108/EC  
 Disposal of electric and electronic material  
**DO NOT DISPOSE OF AS NORMAL WASTE**  
**HARMFUL TO THE ENVIRONMENT**



AUTOMATIC GATE MANUFACTURERS

Via Mantova, 177/A - 37053 Cerea (Verona) Italy  
 Tel. +39 0442 330422 r.a. - Fax +39 0442 331054  
 e-mail: [info@fadini.net](mailto:info@fadini.net) - [www.fadini.net](http://www.fadini.net)



Distributor's box

The manufacturers reserve the right to change the products without any previous notice